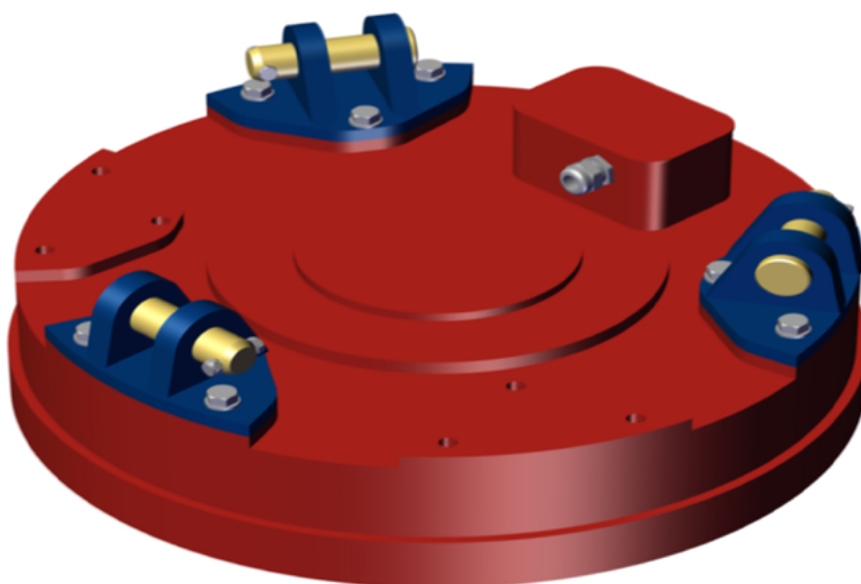




 **KW Hydraulik**  
Aggregate und Werkzeuge  
[www.dynaset-hydraulik.de](http://www.dynaset-hydraulik.de) [info@kw-hydraulik.de](mailto:info@kw-hydraulik.de) +49 3675 421 980



**DATA SHEET**  
**MAG LIFT MAGNET**

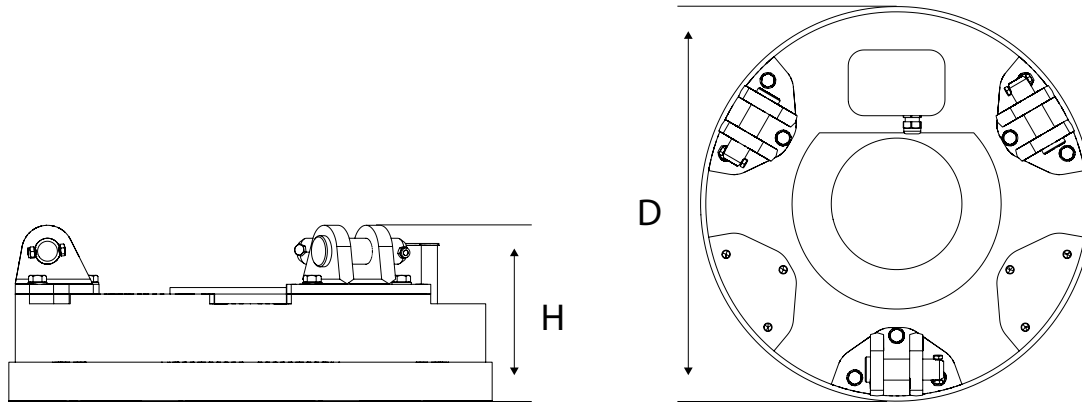


**MAG 700UL**  
**MAG 900L**  
**MAG 1000M**

**MAG1200L**  
**MAG 1400H**  
**MAG 1500H**

**MAG 1600M**  
**MAG 1600H**  
**MAG 1800H**

### DIMENSIONS



MODEL	DIMENSIONS, mm (in)		WEIGHT
	ØD	H	kg (lbs)
<b>MAG 700 UL</b>	750 (29.5)	215 (8.5)	290 (638)
<b>MAG 900 L</b>	960 (37.8)	280 (11.0)	650 (1430)
<b>MAG 1000 L</b>	1050 (41.3)	300 (11.8)	850 (1760)
<b>MAG 1200 L</b>	1260 (49.6)	305 (12.0)	1100 (2420)
<b>MAG 1400 H</b>	1450 (57.1)	375 (14.8)	2300 (5060)
<b>MAG 1500 H</b>	1550 (61.0)	390 (15.4)	2950 (6420)
<b>MAG 1600 M</b>	1650 (65.0)	365 (14.4)	3300 (7260)
<b>MAG 1600 H</b>	1670 (65.7)	420 (16.5)	3850 (8470)
<b>MAG 1800 H</b>	1840 (72.4)	450 (17.7)	4350 (9570)

### TECHNICAL SPECIFICATIONS

		MAG 700 UL	MAG 900 L	MAG 1000 M	MAG 1200 L
<b>OUTPUT CHARACTERISTICS</b>					
Magnet coil power max.	<b>KW</b>	3,0	4,9	5,5	9,0
Operating voltage	<b>VDC</b>	220±5%			
Magnet coils allowed resistance (20 °C)	<b>Ohm</b>	16.1 ± 5%	9.9 ± 5%	8.8 ± 5%	5,4 ± 5%
<b>NOMINAL LIFTING CAPACITY</b>					
Tear-off w/ air gap Ø/300	<b>kg (lbs)</b>	5500 (12100)	10500 (23100)	16000 (35200)	15000 (33000)
Slabs, blocks	<b>kg (lbs)</b>	2700 (5490)	5250 (11550)	8000 (17600)	7500 (16500)
Cast iron pigs	<b>kg (lbs)</b>	105 (231)	230 (506)	350 (770)	410 (902)
Scrap, kg (lbs)	<b>grade 3A</b>	80 (176)	200 (440)	320 (704)	370 (814)
	<b>grade 24</b>	70 (154)	190 (418)	290 (638)	360 (792)
	<b>grade 40</b>	40 (88)	100 (220)	150 (330)	190 (418)

		MAG 1400 H	MAG 1500 H	MAG 1600 M	MAG 1600 H	MAG 1800 H
<b>OUTPUT CHARACTERISTICS</b>						
Magnet coil power max.	<b>KW</b>	10,0	12,5	15,0	16,0	20,0
Operating voltage	<b>VDC</b>	220±5%				
Magnet coils allowed resistance (20 °C)	<b>Ohm</b>	4.8 ± 5%	3.9 ± 5%	3.2 ± 5%	3.0 ± 5%	2.4 ± 5%
<b>NOMINAL LIFTING CAPACITY</b>						
Tear-off w/ air gap Ø/300	<b>kg (lbs)</b>	34000 (74800)	42000 (92400)	44000 (96800)	51500 (113300)	70000 (154000)
Slabs, blocks	<b>kg (lbs)</b>	9500 (20900)	17000 (37400)	22000 (48400)	27500 (60500)	35000 (77000)
Cast iron pigs	<b>kg (lbs)</b>	1100 (2420)	1450 (3190)	1330 (2920)	1650 (3630)	2150 (4730)
Scrap, kg (lbs)	<b>grade 3A</b>	1000 (2200)	1300 (2860)	1220 (2680)	1500 (3300)	2000 (4400)
	<b>grade 24</b>	900 (1980)	1200 (2640)	1150 (2530)	1400 (3080)	1800 (3960)
	<b>grade 40</b>	480 (1050)	600 (1320)	580 (1270)	700 (1540)	900 (1980)

Other options i.e. rectangular and other shapes of magnets available by request.



Menotie 3  
FI-33470 Ylöjärvi, Finland  
tel: +358 3 3488 200  
info@dynaset.com



#### ELECTRICITY

HG Hydraulic Generator  
HGV Variable Hydraulic Generator  
HWG Hydraulic Welding Generator  
HGG Hydraulic Ground Power Generator



#### MAGNET POWER

HMG Hydraulic Magnet Generator  
HMAG Hydraulic Magnet  
MAG Lift Magnet



#### HIGH PRESSURE WATER

HPW Hydraulic High Pressure Water Pump  
HPW Hydraulic Power Washer  
KPL High Pressure Street Washing Unit  
PPL High Pressure Pipe Cleaning Unit  
HPW-DUST High Pressure Dust Suppression System  
HPW-FIRE High Pressure Firefighting System  
FP Fire Fighting Piercing Kit  
HDF Hydraulic Drilling Fluid Pump  
JPL High Pressure Bin Washing System  
HSP Hydraulic Submersible Pump



#### VIBRATION

HVB Hydraulic Vibra  
HVD Hydraulic Directional Vibra



#### POWER BOOSTING

HPI Hydraulic Pressure Intensifier  
HPI-C Hydraulic Pressure Intensifier for Cylinder



#### COMPRESSED AIR

HK Hydraulic Compressor (piston)  
HKL Hydraulic Rotary Vane Compressor  
HKR Hydraulic Screw Compressor



#### KNOW-HOW

HHK Hydraulic Grinder  
HV/HVY Hydraulic Winch / Winch Unit  
Hydraulic Power Take-off (PTO)  
Hydraulic Power Unit Technology  
De-Icing Technology  
Installation Valves

[www.dynaset.com](http://www.dynaset.com)

